



- MP - 07 - ( Weather Cubicle )

---



Standard medium size weather cubicle, for a variety of low and medium voltage electric assemblies, specially entry, metering, transformer and distribution, up to 24kV.

## CHARACTERISTICS

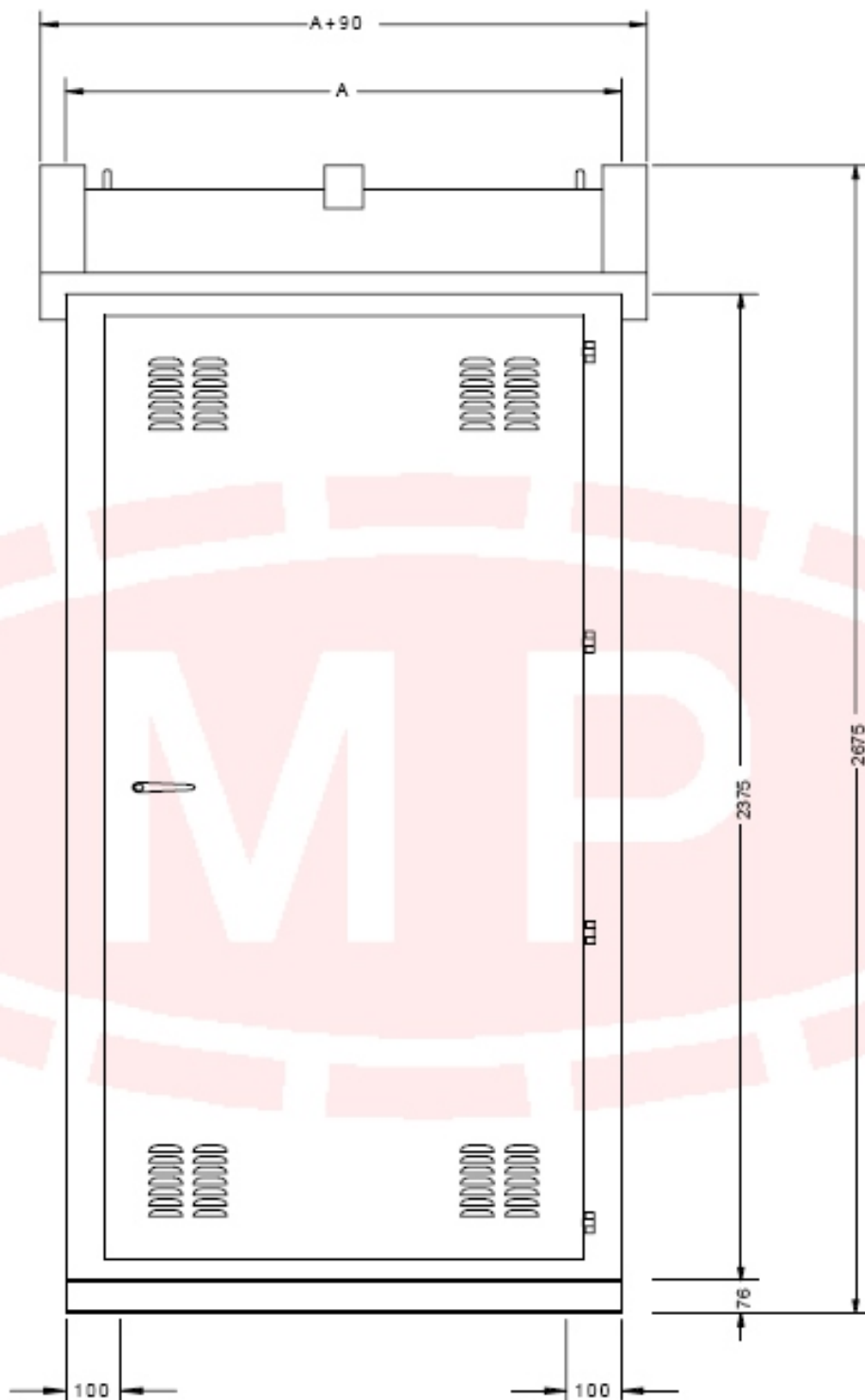
- Easy assembly of components and future expansion.
- Front and rear access.
- Many options of dimensions.
- Metal Enclosed.

## CONSTRUCTION

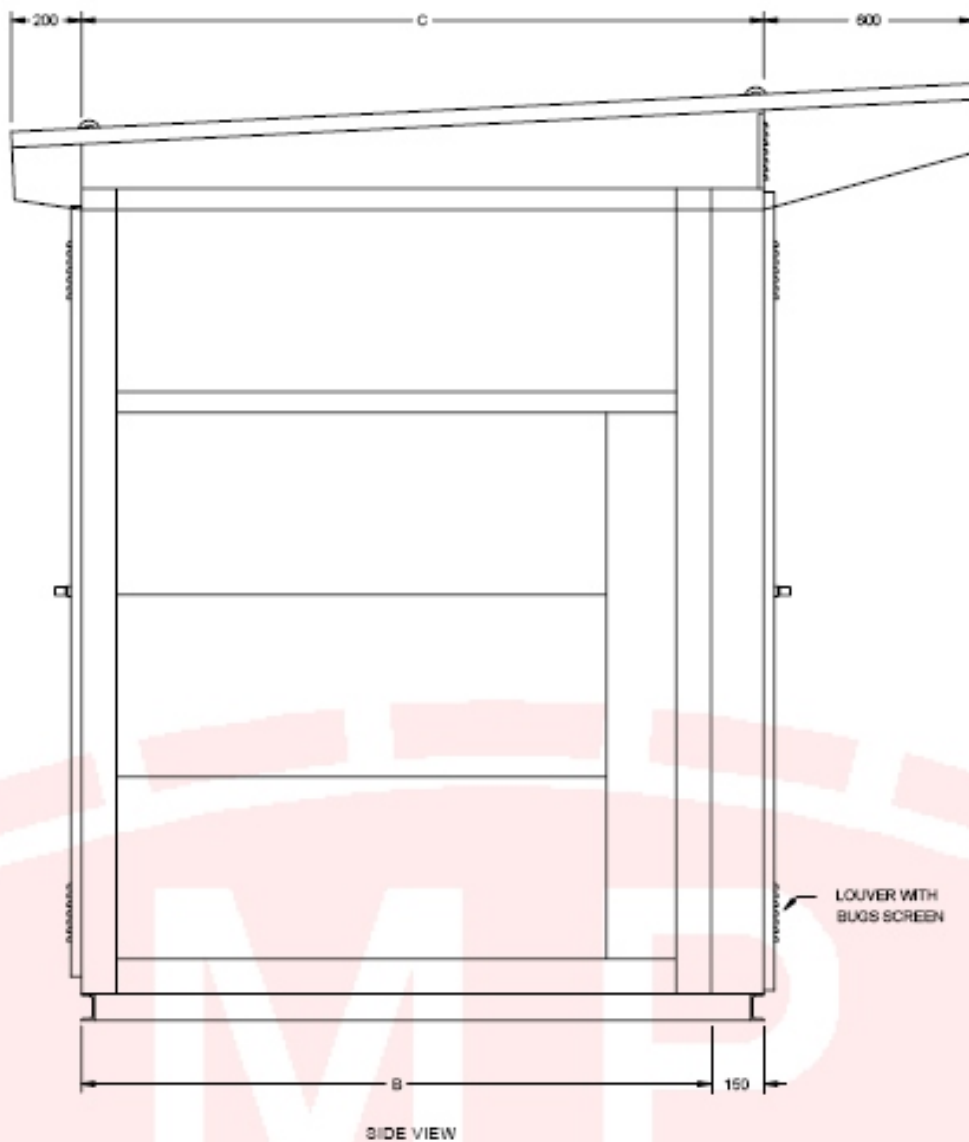
- Protection degree IP 54.
- For outdoors installation.
- One or more doors with rod latch, action by handle with key slot, hidden hinges of die chrome mild steel.
- Internal support rails designed for vertical and horizontal settings.
- Standard structure of mild steel, 2.65mm (12 MSG).
- Roof, side covers and doors of mild steel, 1.9mm (14 MSG).
- Bottom frame of "U" shape rolled A36 steel beams, 3 x 1½ x 3/16.
- Bolted assembly (side covers, roof, floor and bottom frame).
- Doors open 180°.
- Plate treatment by degreasing, deoxidization and phosphate bathes.
- Electrostatic polyester 70µm powder paint.



**MACRO PAINEL**  
INDÚSTRIA E COMÉRCIO LTDA



FRONT VIEW



CODE	A	B
260812	800	1200
260814		1400
260816		1600
260818		1800
260820		2000
260822		2200
260824		2400
260912	900	1200
260914		1400
260916		1600
260918		1800
260920		2000
260922		2200
260924		2400
261012	1000	1200
261014		1400
261016		1600
261018		1800
261020		2000
261022		2200
261024		2400
261112	1100	1200
261114		1400
261116		1600
261118		1800
261120		2000
261122		2200
261124		2400

CODE	A	B
261212	1200	1200
261214		1400
261216		1600
261218		1800
261220		2000
261222		2200
261224		2400
261312	1300	1200
261314		1400
261316		1600
261318		1800
261320		2000
261322		2200
261324		2400
261412	1400	1200
261414		1400
261416		1600
261418		1800
261420		2000
261422		2200
261424		2400
261512	1500	1200
261514		1400
261516		1600
261518		1800
261520		2000
261522		2200
261524		2400